

**Fiscal Year 2008-2012 Approvals and Denials in CLAIMS3
for Selected Countries by
Form, Country and Fiscal Year**

Approval

Sum of Count Row Labels	Column Labels CRI89	EOIR29	I102	I129	I129F	I129S	I130	I1300	I131	I140
AFGHA	1,463	68	34	129	1,464		5,397		4,381	70
EGYPT	4,242	118	159	4,031	1,894	15	22,385		8,879	1,424
INDON	3,916	25	294	10,292	1,024	10	8,621		7,897	1,815
IRAN	4,502	287	169	4,425	3,415	30	40,285	1	22,298	3,140
IRAQ	2,350	60	203	493	1,135	2	7,877		15,817	262
JORDA	3,745	95	118	1,707	964	2	15,666		4,133	501
KUWAI	1,122	16	63	668	354	4	3,866		2,237	518
LEBAN	3,889	63	90	3,976	1,374	25	14,311	1	6,809	1,543
LIBYA	301	5	25	193	177	2	862		691	95
MOROC	5,313	94	146	2,069	2,146	9	15,779		2,949	454
PAKIS	9,497	764	381	14,919	4,488	48	71,882	3	28,337	6,351
SAUDI	1,076	7	336	736	340	6	3,705		2,712	332
SOMAL	786	73	536	62	658		7,003		15,149	28
SRILA	963	13	63	3,339	172	7	3,328		4,005	1,150
SUDAN	702	45	258	189	408		4,678		5,801	71
SYRIA	2,072	65	62	2,196	1,242	2	12,322		4,374	770
TUNIS	616	11	26	411	237	3	1,650		577	158
UZBEK	2,036	13	95	862	574		5,058		4,861	248
YEMEN	1,143	92	45	101	581		16,610	2	1,969	51
Grand Total	49,734	1,914	3,103	50,798	22,647	165	261,285	7	143,876	18,981

Denial

Sum of Count Row Labels	Column Labels CRI89	EOIR29	I102	I129	I129F	I129S	I130	I1300	I130S	I131
AFGHA		1	11	42	182		960			201
EGYPT		2	32	825	217	1	2,338	3		891
INDON			46	1,687	93		685			565
IRAN		3	28	1,053	398		3,531	2		1,849
IRAQ			18	147	193		1,115			677
JORDA			21	382	149		2,279	1		441
KUWAI			9	191	35		619			219
LEBAN			19	1,109	162		1,741	7		630
LIBYA			6	40	17		95			63
MOROC	1		19	295	348		1,656			250
PAKIS	1	12	87	4,349	540		8,919	2	2	3,394
SAUDI			16	176	39	1	357			219

SOMAL		3	66	6	132		1,904		495		
SRILA			8	795	16		331		370		
SUDAN			29	36	91		652		364		
SYRIA			13	286	150		1,188		371		
TUNIS			2	87	28		228		64		
UZBEK			17	193	44		679		204		
YEMEN		10	20	28	128		4,381	9	176		
Grand Total		2	31	467	11,727	2,962	2	33,658	24	2	11,443

Please note: The report reflects the most up-to-date data available at the time the report is generated.

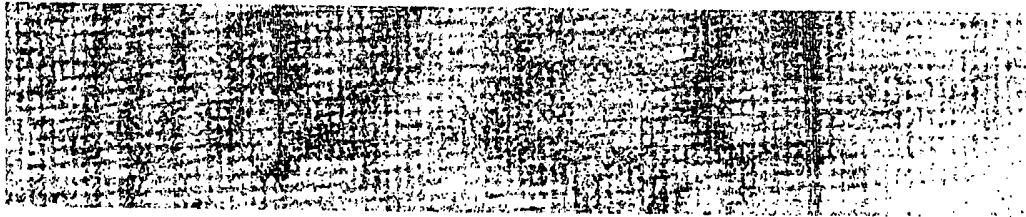
Report created April 12, 2013

System: CIS Consolidated Operational Repository (CISCOR)

Office of Performance and Quality (OPQ), Data Analysis and Reporting Branch (DARB) DL (data pulled by CSC contractor)

Parameters: Form for Approvals from FY08-12

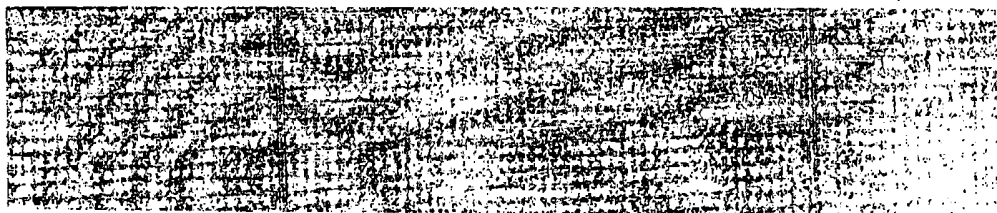
Form Number = (all C3 Forms),



I181	I191	I192	I193	I212	I290A	I290B	I290C	I360	I485	I526	I539	I600A	I601	I612	I687
54		1		1		44		2,661	5,514	2	170		12	18	
234		12		3		152		247	14,226	23	5,266		47	165	3
45		25		1		100		179	12,440	10	3,730		20	151	
296		8		8		307		132	39,211	153	3,530		54	112	19
84	1	2		3		51		6,837	62,817	7	543		17	60	
145	1	10		3	1	68		79	7,163	1	1,993		29	41	1
48		4				42		39	2,954	2	2,850		11	51	
115		2		6		102		88	7,859	9	1,658		31	447	
3						11		4	827		597		4	27	1
99		21				106		191	7,428	2	1,462		23	19	2
451		29		26		777		312	31,031	20	12,332	2	217	703	13
53		3		1		55		28	3,182	1	5,768		7	66	
18		1		8	1	112		32	35,465		45		41	7	
23		16				84	1	90	4,526	2	2,381		16	8	1
30		1				50		30	9,717		462	1	12	15	
72		1		2		85		69	5,825	1	1,590		21	258	
29						11		37	1,145		238		3	33	
71		9	1			68		146	10,472		1,788		13	24	
34		1			2	78		45	2,818		365		20	14	
1,904	2	146	1	62	4	2,303	1	11,246	264,620	233	46,768	3	598	2,219	40

I140	I181	I191	I192	I193	I212	I290A	I290B	I290C	I360	I485	I526	I539	I600A	I601	I612
14						1	51		109	339	1	79		3	6
276	5		1		3	3	125		167	1,672	7	1,514		29	56
191			16		2		67		50	795	4	896		13	14
781	3	4	4		4	1	193	1	65	1,615	37	862		18	4
54	1				1		31		419	936	3	185		6	10
90	3		1		3		40		50	1,294	1	817		19	10
63	3						23		19	350	3	488		9	4
326	2		4		3		68		38	859	4	579		26	45
11							11		1	94		125		1	1
94	1	2	6		2		53		79	982	7	463		18	2
1,444	8	7	17		11	3	704	16	185	4,981	8	2,401	1	119	59
40			12				38		11	362		1,161		2	5

3	1			3		81		4	2,114		26		24		
156	1	1	3			98	2	20	433		485		3	3	
24		1	3	1		33		8	944	1	164		7	2	
177	2		3			50		29	599	2	454	1	13	23	
40	2					11		22	192		79		5	11	
74			1			32		89	733		512		11	24	
16	18	1		1	1	48		67	405		150		7	3	
3,874	50	16	71		34	9	1,757	19	1,432	19,699	78	11,440	2	333	282

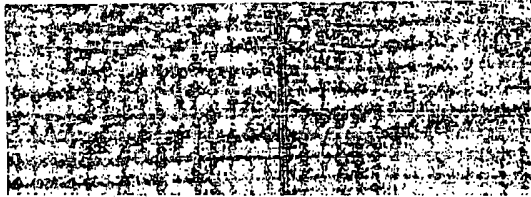


1690	1698	1700	1730	1751	1752	1765	1817	1821	1824	1824 A	1829	190	1914	MOTIC
			455	1,411		5,699			33			2,228		16
	2		1,117	4,016		22,904	1	26	290		1	5,842		44
			665	3,725		30,379		3	181		10	4,722		28
1	12		826	4,288		40,638	5	3	494		17	11,094		56
			1,348	2,252		75,670		1	59		2	5,281		15
	4		96	3,551		9,980		3	191			4,290		26
			28	1,088		5,121		7	63			862		4
			65	3,794		10,827	3	1	215		5	3,985		22
			6	284		1,979		4	17			309		
	2		32	5,087		9,416		4	115			3,642		26
1	23	1	1,229	8,910		50,492	23	5	959		14	16,425		141
			61	1,016		6,382		53	45			1,123		10
			2,434	723		19,827		718	34			3,584		29
			541	923		8,815		1	77		1	1,335		11
			724	642		7,033		715	31			2,548		3
	1		125	2,016		8,462	1	179	155		1	2,221		13
			3	609		1,691			19			407		
			847	1,840		8,864			93			1,922		7
			300	1,037		3,622		6	96			3,193		10
2	44	1	10,902	47,212		327,801	33	1,729	3,167		51	75,013		461

1687	1690	1698	1700	1730	1751	1752	1765	1817	1821	1824	1824	1829	190	1914
				211	29		406			20			234	
20		3		105	197		2,280		8	59			676	
12		1		63	44		2,836	1		27			248	
105	3	9		130	105		2,163	2		127		2	1,119	
3		1	1	332	96		2,922			31			552	
9		2	1	8	196		802	1		52			366	
15	1	2												

3				9	10	182			4		37
12	2	3		5	182	766			24		419
347	11	22	1	276	197	5,286	34		197	2	1,383
1				58	41	389	2	6	15		110

1				2,034	38		1,359		76	14			537	2
61	3	1		87	18		778			9			46	
3		2		730	20		665		114	15			380	
11				37	74	1	743	2	2	39			258	
1		1		2	37		176			2			48	
				131	67		1,006			14	1	1	308	
				78	30		371			47			192	
605	20	47	3	4,333	1,584	1	24,449	42	209	763	1	6	7,378	2



N336	N470	N565	N600	N644	OS155A	Grand Total
1	1	539	8		5,867	37,741
		451	143		29,650	128,012
		149	10	1	3,517	93,985
1		1,187	63		35,782	216,849
		655	41	1	16,076	200,022
1		325	30		12,993	67,956
		105	3		2,378	24,508
		510	18		10,193	72,036
		40	2		795	7,261
2		173	37		15,805	72,653
1		906	285		59,470	321,468
		78	45		3,462	30,689
32		464	498		3,306	91,674
		82	33		4,315	36,322
1		239	72		5,208	39,686
1		240	21		7,757	52,222
		18	4		962	8,898
		128	20		16,019	56,079
		301	53		11,668	44,257
40	1	6,590	1,386	2	245,223	1,602,318

MOTI	N336	N470	N565	N600	N644	OS155A	Grand Total
9	1		110	2			3,022
31			56	1			11,603
26		1	16	1			8,400
41			203	3		1	14,469
11			66	1			7,812
17			36	2			7,093
3			11				2,599
19			63				7,268
1			1				712
7			14				5,712
143			76	7			35,252
11			4	2			3,078

13	13	2	29	89		9,069
18			7	1		3,754
4	2		25	6		4,326
10	1		11	2		4,552
6			3			1,047
10	1		12	1		4,165
7	1		38	3		6,236
387	19	3	781	121	1	140,169